

# **HYBRID**

# **TRAILER**

## **Owner's Manual**



Lufkin Manufacturing  
20020 Interstate 30  
Benton, AR 72019  
Ph: (501) 316-4040  
Fax: (501) 634-4141  
[www.lufkinmfg.com](http://www.lufkinmfg.com)

# Table of Contents

|   |    |
|---|----|
| About your <i>Hybrid</i> Trailer .....            | 2  |
| Operating Instructions .....                      | 3  |
| Connecting Instructions .....                     | 4  |
| Dumping Instructions.....                         | 5  |
| Monthly Maintenance .....                         | 5  |
| Hydraulic System Maintenance .....                | 6  |
| Air System Parts .....                            | 7  |
| Draft Arm Parts .....                             | 8  |
| Draft Arm Parts List.....                         | 9  |
| Hydraulic Cylinder.....                           | 10 |
| Hydraulic Cylinder Replacement Service Parts..... | 11 |
| Lights .....                                      | 12 |
| Junction Box & 7-Way Receptacle.....              | 13 |
| Integra Suspension .....                          | 14 |
| Integra Suspension Parts .....                    | 15 |
| Tailgate Latch Assembly .....                     | 16 |
| Tailgate Hinge Assembly .....                     | 17 |
| Upper 5 <sup>th</sup> Wheel .....                 | 18 |
| Parts List .....                                  | 19 |
| Lufkin Manufacturing Warranty .....               | 21 |

## About Your *Hybrid* Trailer

# Operating Instructions

1. **DO NOT** operate this equipment until you have been properly trained in its operation.
2. When the vehicle is in transit the hoist control valve **MUST BE** kept in neutral and the PTO disengaged.
3. Tailgate controls **MUST BE** locked when this vehicle is in transit.
4. **DO NOT** overload the dump body or trailer.
5. When the truck is stored or not in use, the body **MUST BE** in the fully lowered position, and resting on the chassis or hoist frame. Ignition key **SHOULD BE** removed to prevent tampering by un-authorized personnel.
6. Inspect the hydraulic oil level and quality regularly and be sure to change it regularly and especially when a new cylinder is installed.
7. Inspect all hydraulic hoses regularly.
8. Regularly lubricate the cylinder's end-mounts.
9. Be sure the cylinder is free of entrapped air. (Bleed Cylinder if necessary, see page 6)
10. When the body is in the elevated or raised position for any repairs or adjustments, it **MUST BE** securely propped or blocked so it can not fall on anyone.
11. The Landing support legs are attached to the draft arm, which prevents the upper fifth wheel plate from falling to the ground when the trailer is unhooked. This eliminates the need for chains and hooks to hold the draft arm assembly in the up position. Before attempting to move the trailer, the telescoping legs should be collapsed and the support pin with the safety clip should be properly installed.

## **CAUTION**

***The Landing Support Legs are not designed for supporting a loaded trailer.***

# Connecting Instructions

Tractor – Trailer operation is performed by following these instructions:

1. Prepare the tractor 5<sup>th</sup> wheel to receive the trailer king pin by pulling the locking handle to the open position. The jaws will automatically lock when contact is made with the king pin. Back the truck until the truck 5<sup>th</sup> wheel just touches the trailer 5<sup>th</sup> wheel.

**NOTE** – All frameless and High Dump trailers must be used with a blocked 5<sup>th</sup> wheel.

2. Make glad hand connections, lighting plug and hydraulic hose connections. Supply air to the trailer, then lock the trailer brakes.
3. Back the tractor into position to engage the 5<sup>th</sup> wheel until the jaws lock and the locking handle is in the locked position. Do not attempt operations without the proper 5<sup>th</sup> wheel.
4. Inspect trailer or proper brake operation and electrical function. Check hydraulic lines to insure proper hook-up.
5. For complete connecting instructions see the United States Department of Transportation; Federal Motor Carrier Safety Administration regulations 393.70; 393.71; D1; V1; V2

# Dumping Instructions

1. This vehicle **MUST BE** kept on level ground before dumping. The hydraulic cylinder cannot withstand sideloading.
2. **DO NOT** raise trailer on ground that has been recently excavated or filled without being properly compacted.
3. **DO NOT** raise the trailer unless the tractor and trailer are in line.
4. **DO NOT DUMP BENEATH HIGH-VOLTAGE POWER LINES.**
5. The operator **MUST REMAIN** at the controls during the dumping cycle.
6. The tailgate controls **MUST BE** released before the front of the body is 2 feet (0.6m) above the chassis frame.
7. When operating **DO NOT** allow anyone to stand in or move through the area where the hoist operates or into an area where an upset load might fall.
8. **DO NOT** jerk the truck / trailer when trying to dump a sticky load.

# Monthly Maintenance

1. Lubricate upper tailgate hinge pins (L & R)
2. Lubricate draft arm pins front and rear
3. Lubricate auxiliary draft arm pins front and rear
4. Bleed air out of hoist (see page 6)
5. Check oil level in wheel hubs
6. Inspect for oil leakage on inside of wheel hub
7. Lubricate tailgate latch assembly
8. Lubricate upper coupler plate (2 places)
9. Check wheel nuts for tightness

**\* See manufacturer's recommendation**

# Hydraulic System Maintenance

## **Hydraulic Fluid**

A good grade of non-foaming 10 weight hydraulic fluid should be used. Before filling, be sure that the oil reservoir is clean. Dirty oil containing dirt and metal particles is nearly always responsible for premature pump failure. Periodic inspection should be made for dirt or sludge in the bottom of the reservoir. Avoid racing the engine to increase pump RPM as this will cause overheating of the pump, resulting in oil breakdown.

## **Air Entrapment**

Air entrapped in the hydraulic system causes erratic operation such as spongy response for the hoist or jerky operations. Follow these steps to properly purge system:

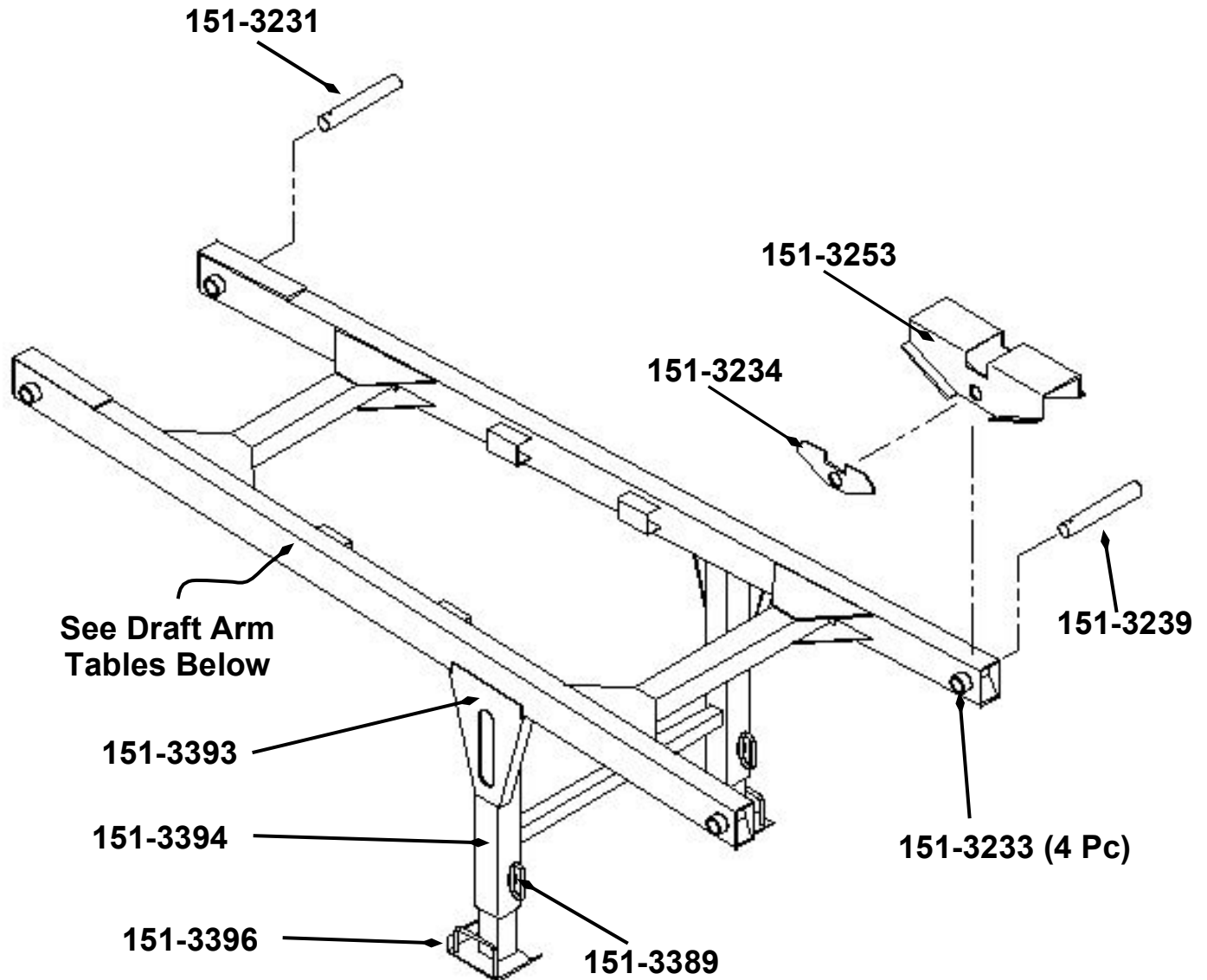
- A. Loosen the bleeder valve located on the top pin eye.
- B. Operate the pump at slow engine speed until the air is eliminated and hydraulic fluid is present.
- C. Tighten the bleeder valve cap securely to stop the oil flow. The hoist should operate smoothly.

## **Inspection**

Hydraulic system is subjected to extreme service due to vibration; therefore, periodic inspection is necessary to insure continuous service. Check the pump and the hoist connection for leakage. The linkage to the PTO and the pump valve should be checked for proper operation.



# Draft Arm Parts



151-3397 Complete Leg Assembly  
151-3398 Leg Assembly - One Side

## Hybrid Frameless

| <u>Length</u> | <u>Draft Arm</u> |
|---------------|------------------|
| 22' 24'       | 151-3245         |
| 26'           | 151-3246         |
| 28' 30'       | 151-3247         |
| 32' 35' 36'   | 151-3248         |

## Hybrid High Dump

| <u>Length</u> | <u>Draft Arm</u> |
|---------------|------------------|
| 22'           | 151-3218         |
| 24'           | 151-3219         |
| 26'           | 151-3220         |
| 28'           | 151-3221 SH      |
| 30'           | 151-3221 LH      |
| 32'           | 151-3222         |



# Draft Arm Parts List

## Draft Arm

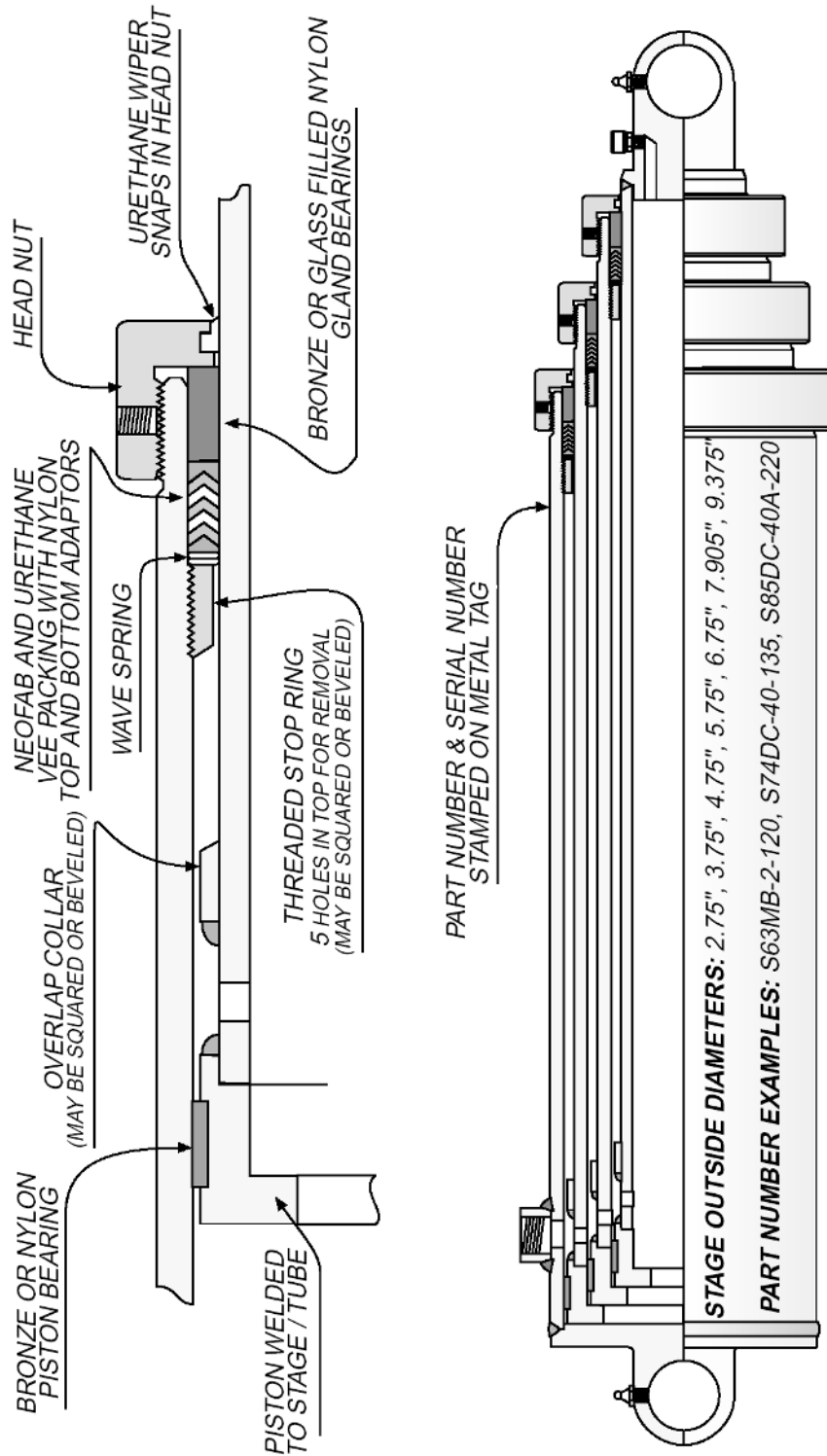
151-3245 – 22’-24’ Frameless Draft Arm  
151-3246 – 26’ Frameless Draft Arm  
151-3247 – 28’ - 30’ Frameless Draft Arm  
151-3248 – 32’ 35’ 36’ Frameless Draft Arm  
151-3218 – 22’ High Dump Draft Arm  
151-3219 – 24’ High Dump Draft Arm  
151-3220 – 26’ High Dump Draft Arm  
151-3221SH – 28’ High Dump Draft Arm  
151-3221LH – 30’ High Dump Draft Arm  
151-3222 – 32’ High Dump Draft Arm  
151-3231 – Front Draft Arm Pin  
151-3239 – Rear Draft Arm Pin  
151-3233 – Bushing (4) Reqd  
151-3234 – Middle Bushing Doubler Plate  
151-3253 – Draft Arm Pivot Plate  
151-3397 – Complete Landing Leg Assy  
151-3398 – Landing Leg Assembly (1 Side)  
151-3396 – Lower Landing Leg Assembly  
151-3394 – Upper Landing Leg Assembly  
151-3393 – Landing Leg Gusset  
151-3389 – Landing Leg Pin

## Auxiliary Draft Arm

151-3230 – 22’ - 28’                      1994 or earlier  
151-3228 – 22’                                1995 and later  
151-3229 – 24’ – 26’    1995 and later  
\* Call **Lufkin Manufacturing** – 28’    1995 and later\*

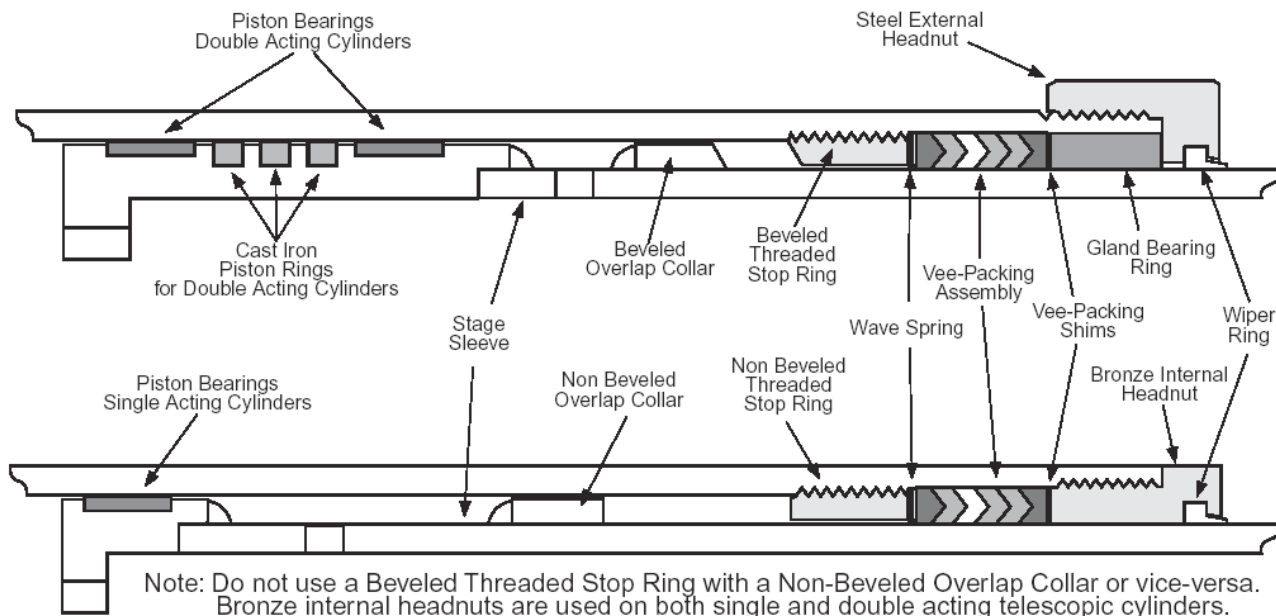
# Hydraulic Cylinder

## COMMERCIAL



Parker Hannifin Corporation  
Mobile Cylinder Division  
Youngstown, OH

## Genuine Replacement Service Parts

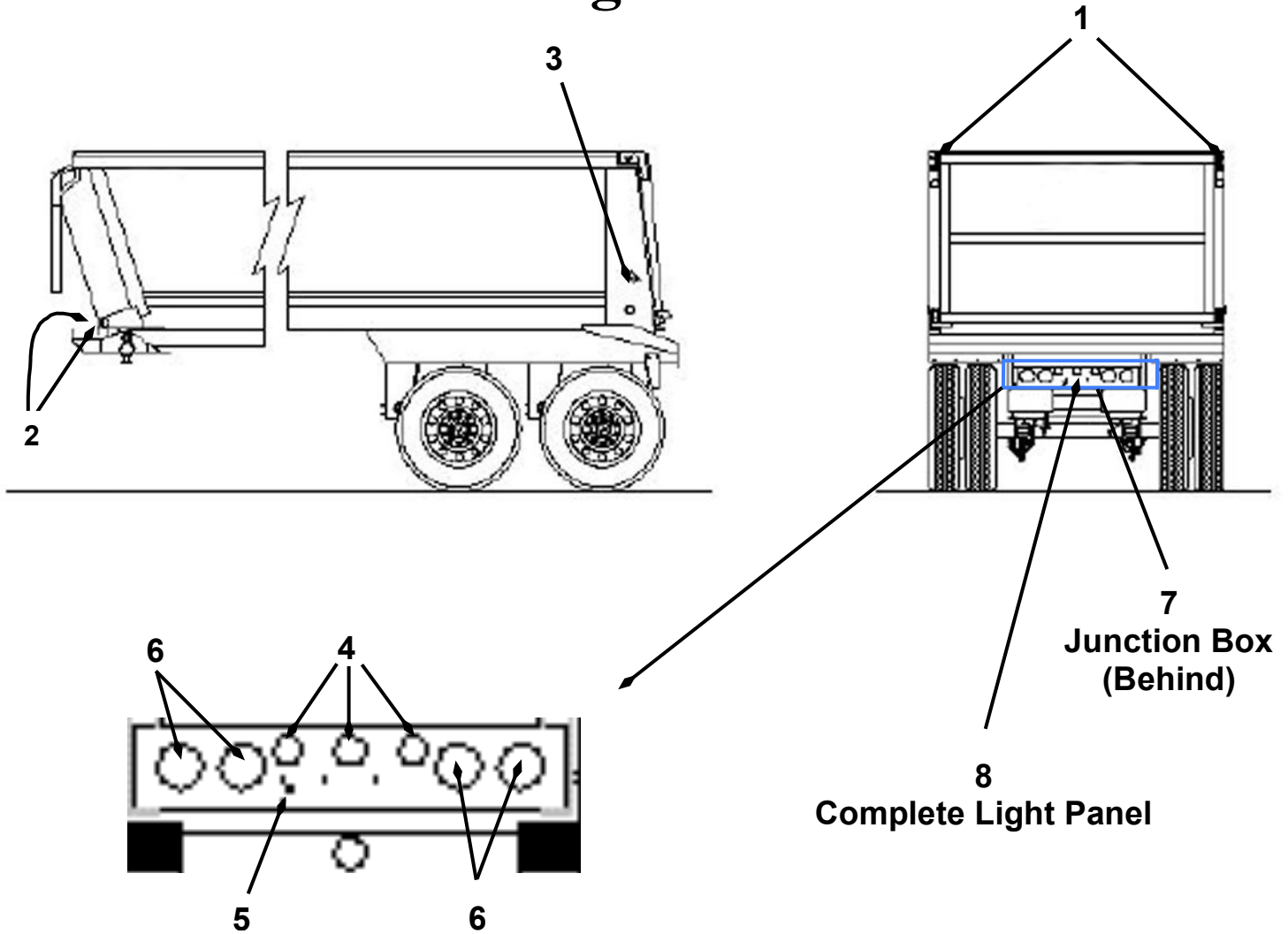


### Following are service parts used on STANDARD DESIGN COMMERCIAL cylinders

Note: Commercial Hydraulics manufactures many different types and designs of cylinders. If you are not sure of service parts required please refer to the Cylinder Assembly print.

| Description                       | 2.75" Stage                 | 3.75" Stage                 | 4.75" Stage                 | 5.75" Stage                 | 6.75" Stage                 | 7.905" Stage                | 9.375" Stage                |
|-----------------------------------|-----------------------------|-----------------------------|-----------------------------|-----------------------------|-----------------------------|-----------------------------|-----------------------------|
| Vee-Packing Assembly with Shims   | 375-9009-017<br>AJ3009-27   | 375-9009-034<br>AJ3009-37   | 375-9009-018<br>AJ3009-47   | 375-9009-019<br>AJ3009-57   | 375-9009-020<br>AJ3009-67   | 375-9009-021<br>AJ3009-79   | 375-9009-022<br>AJ3009-93   |
| Wiper Ring                        | 391-3882-061<br>Y3026-27    | 391-3882-053<br>Y3026-37    | 391-3882-054<br>Y3026-47    | 391-3882-055<br>Y3026-57    | 391-3882-056<br>Y3026-67    | 391-3882-057<br>Y3026-79    | 391-3882-058<br>Y3026-93    |
| Gland Bearing Glass Filled Nylon  | 391-2682-001<br>J1003-1-1   | 391-2682-002<br>J1003-1-2   | 391-2682-003<br>J1003-1-3   | 391-2682-004<br>J1003-1-4   | 391-2682-005<br>J1003-1-5   | 391-2682-006<br>J1003-1-6   | 391-2682-007<br>J1003-1-7   |
| Gland Bearing Bronze              | 375-9003-064<br>AH1003-27   | 375-9003-044<br>AH1003-37   | 375-9003-045<br>AH1003-47   | 375-9003-046<br>AH1003-57   | 375-9003-063<br>AH1003-67   | 375-9003-041<br>AH1003-79   | 375-9003-066<br>AH1003-93   |
| Wave Spring                       | 391-3581-320<br>P1327-27    | 391-3581-300<br>P1327-37    | 391-3581-301<br>P1327-47    | 391-3581-302<br>P1327-57    | 391-3581-303<br>P1327-67    | 391-3581-304<br>P1327-79    | 391-3581-310<br>P1327-93    |
| Threaded Stop Non-Beveled         | 375-4020-001<br>F4020       | 375-3020-002<br>F3020       | 375-6020-002<br>F6020       | 375-5020-001<br>F5020       | 375-7020-001<br>F7020       | 375-8020-001<br>F8020       | 375-9020-001<br>F9020       |
| Threaded Stop Beveled             | 375-3020-110<br>AG3020-1-27 | 375-3020-111<br>AG3020-1-37 | 375-3020-112<br>AG3020-1-47 | 375-3020-113<br>AG3020-1-57 | 375-3020-114<br>AG3020-1-67 | 375-3020-120<br>AG3020-2-79 | 375-3020-119<br>AG3020-2-93 |
| Piston Bearing Glass Filled Nylon | 391-2684-123<br>U3023-32    | 391-2684-069<br>U3023-42    | 391-2684-070<br>U3023-52    | 391-2684-071<br>U3023-62    | 391-2684-072<br>U3023-72    | 391-2684-073<br>U3023-84    | 391-2684-098<br>U3023-98    |
| Piston Bearing Bronze             | N/A                         | 375-9023-079<br>AM3023-42   | 375-9023-038<br>AM3023-52   | 375-9023-039<br>AM3023-62   | 375-9023-040<br>AM3023-72   | 375-9023-041<br>AM3023-84   | 375-9023-042<br>AM3023-98   |
| Cast Iron Piston Ring             | 391-2683-010<br>X78-3.25-1  | 391-2683-014<br>X78-4.25    | 391-2683-019<br>X78-5.25    | 391-2683-024<br>X78-6.25    | 391-2683-029<br>X78-7.25    | 391-2683-034<br>X78-8.437   | 391-2683-042<br>X78-9.88    |
| Steel External Headnut            | 391-1470-162<br>YA3011-27   | 391-1470-163<br>YA3011-37   | 391-1470-164<br>YA3011-47   | 391-1470-165<br>YA3011-57   | 391-1470-166<br>YA3011-67   | 391-1470-167<br>YA3011-79   | 391-1470-177<br>YA3011-93   |
| Bronze Internal Headnut           | 391-1470-079<br>MA3011-27   | 391-1470-070<br>MA3011-37   | 391-1470-071<br>MA3011-47   | 391-1470-072<br>MA3011-57   | 391-1470-073<br>MA3011-67   | 391-1470-074<br>MA3011-79   | 391-1470-075<br>MA3011-93   |

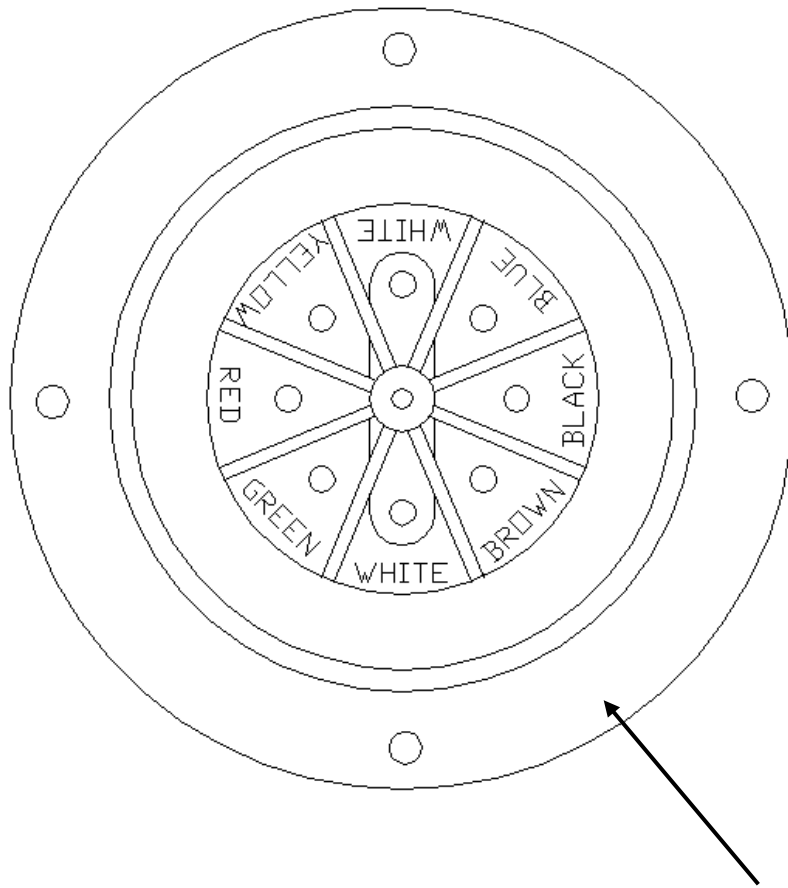
# Lights



## LEGEND

| DRAWING NUMBER | QUANTITY REQUIRED | INCANDESCENT PART NUMBER | LED PART NUMBER | HARNESS PART NUMBER | GROMMET PART NUMBER |
|----------------|-------------------|--------------------------|-----------------|---------------------|---------------------|
| 1              | 2                 | 151-3332                 | 151-3432        | 151-3411            | 151-3335            |
| 2              | 4                 | 151-3333Y                | 151-3433Y       | 151-3412            | 151-3336            |
| 3              | 2                 | 151-3333R                | 151-3433R       | 151-3413            | 151-3336            |
| 4              | 3                 | 151-3333R                | 151-3433R       | 151-3414            | 151-3336            |
| 5              | 1                 | 151-3338                 | -----           | 151-3414            | -----               |
| 6              | 4                 | 151-3334                 | 151-3434        | 151-3415 L/R        | 151-3337            |
| 7              | 1                 | 151-3339                 | -----           |                     |                     |
| 8              | 1                 |                          | 151-3330        |                     |                     |

# Junction Box & 7-Way Receptacle



## Wiring Color Code

White: Ground

Black: Clearance, Side Marker & Ident

Yellow: Left Turn & Hazard

Red: Stop Lamps & Anti-Lock Secondary

Green: Right Turn & Hazard

Brown: Tail & License Plate

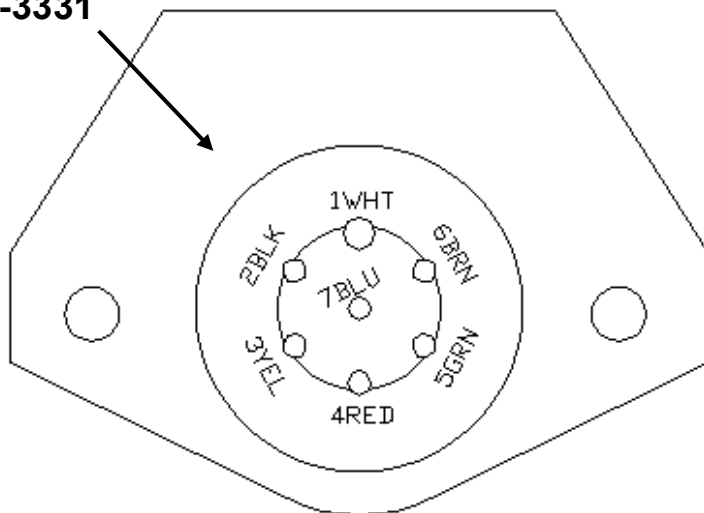
Blue: Auxiliary Circuit /ABS\*

\* On trailers produced before 3-1-98, the Auxiliary Circuit was not used for ABS

Junction Box – (Interior View)

151-3339

151-3331

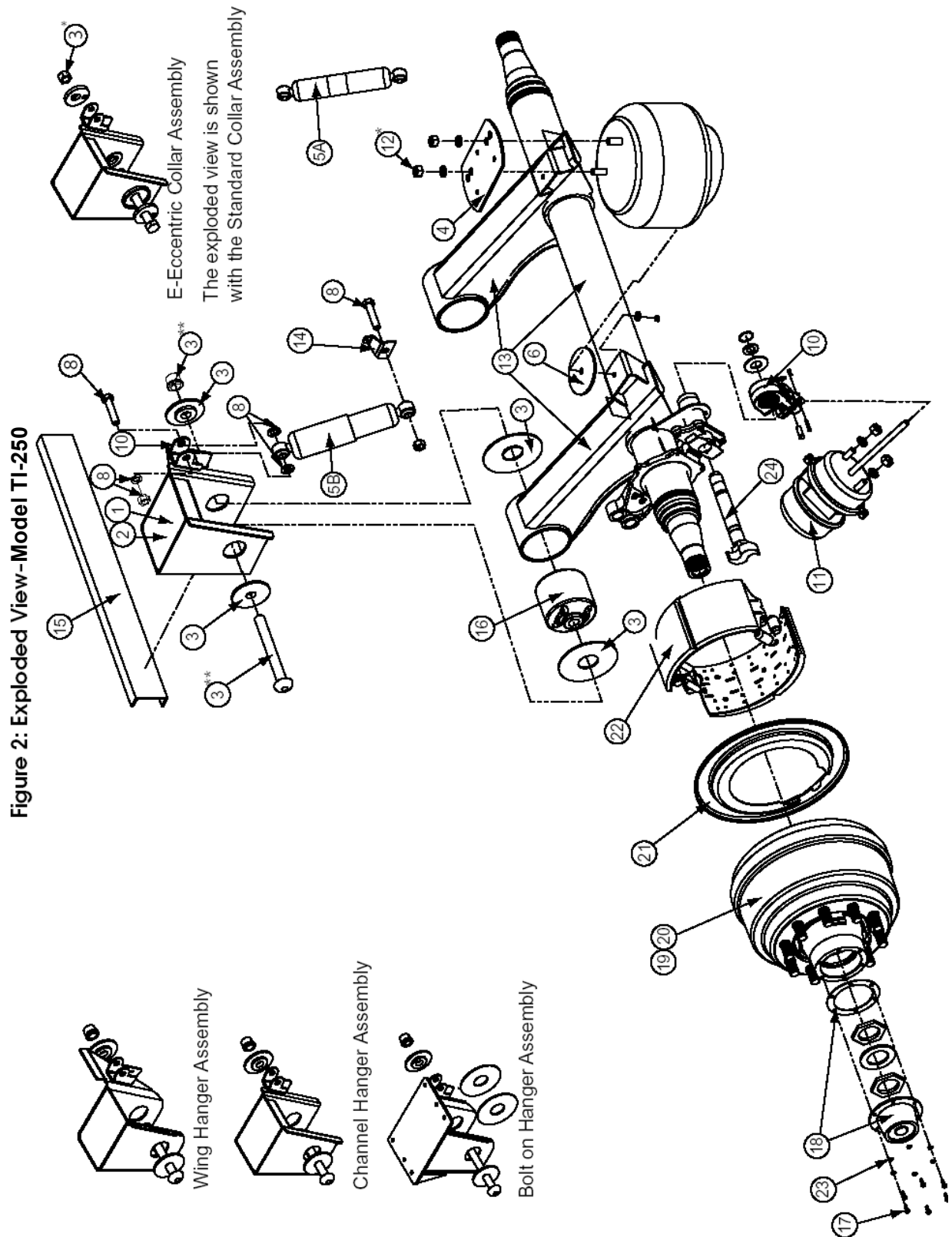


## 7-Way Receptacle

### Terminal      Wire Color

|   |              |
|---|--------------|
| 1 | WHT (White)  |
| 2 | BLK (Black)  |
| 3 | YEL (Yellow) |
| 4 | Red (Red)    |
| 5 | GRN (Green)  |
| 6 | BRN (Brown)  |
| 7 | BLU (Blue)   |

# Integra Series Suspension



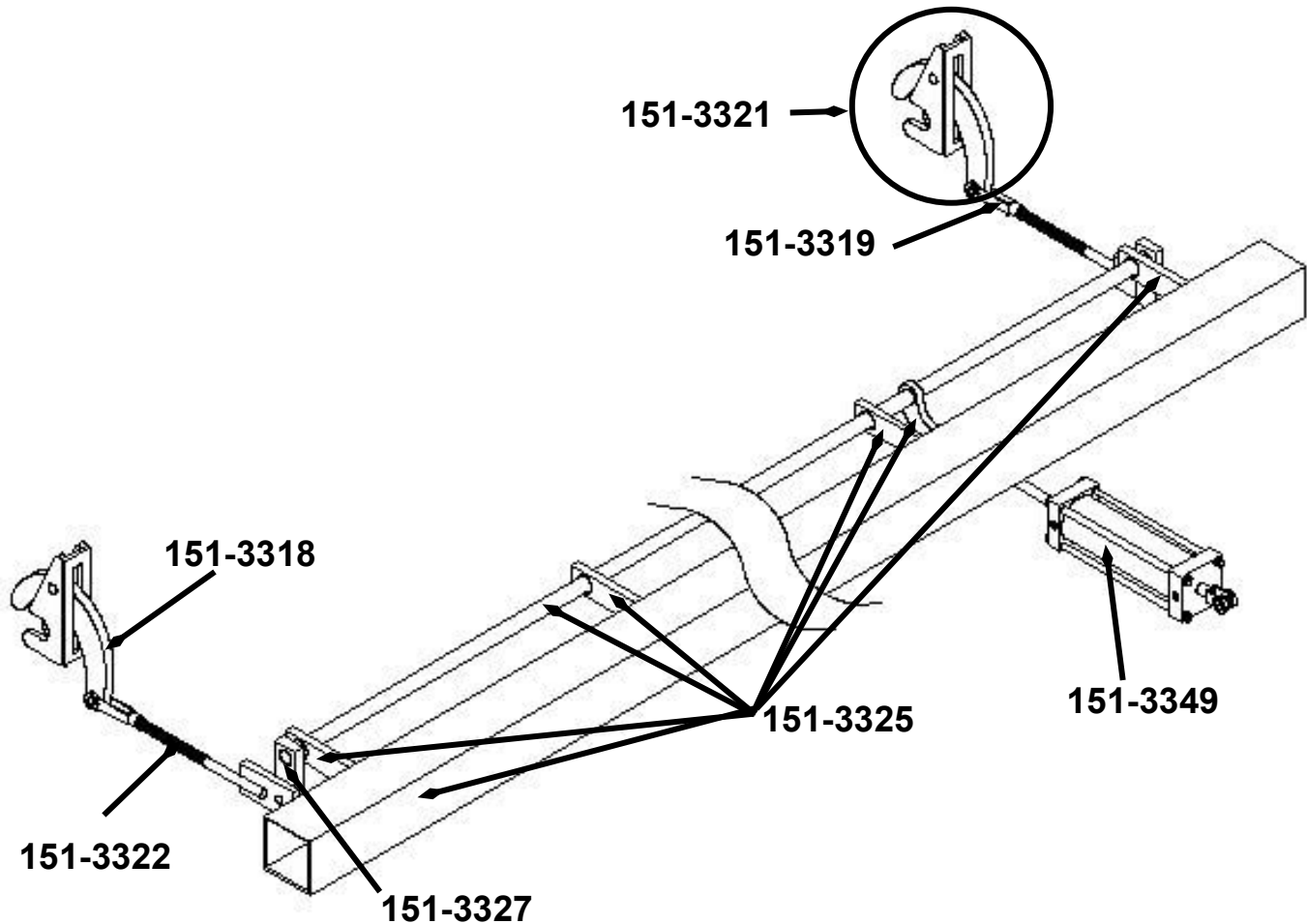
# Integra Series Suspension Parts

The following table describes Figure 2 and the corresponding part numbers. All Integra Model assemblies have the same part numbers except for the Hangers, Collar Pack, Upper bag plate assembly and Axle/Arm assembly. These differences are shown in tables under the corresponding model numbers.

**Table 1    Parts List**

| Item # | Description   | Quantity  | Part #                                      |
|--------|---|-----------|---|
| 1      | Hanger Assembly Left Hand Shown   | 1         | See "Individual Models" beginning on page 7 |
| 2      | Hanger Assembly Right Hand, Right Hand collar pack assembly reversed for illustration | 1         | See "Individual Models" beginning on page 7 |
| 3      | Collar Pack   | 2         | See "Individual Models" beginning on page 7 |
| 4      | Upper Bag Plate Assembly  | 2         | See "Individual Models" beginning on page 7 |
| 5A     | Shock Absorber for TI-250T & TI-251T  | 2         | 17186-01                                    |
| 5B     | Shock Absorber for TI-300T, TI-301T and TI-302T                                       | 2         | 17186                                       |
| 6      | Washer, Lower Bag   | 2         | 90864                                       |
| 7      | Air Spring (load)   | 2         | AS0159-1G                                   |
| 8      | Vertical Shock Hardware Pack  | 1         | 16002                                       |
| 9      | Auto Slack 1.5 R.H.   | 1         | 17938-22                                    |
| 10     | Auto Slack 1.5 L.H.   | 1         | 17938-12                                    |
| 11     | Brake Chamber 30/30   | 2         | 17040-04                                    |
| 12     | Air Spring Pack AS0159-1G   | 1         | 16080                                       |
| 13     | Axle Arm Assembly   | 1         | <b>Contact Factory</b>                      |
| 14     | Level Valve Rod Connection Bracket  | 1         | 30259                                       |
| 15     | Crossmember Weld On 41" long  | 1         | 12524                                       |
| 16     | Bushing   | 2         | 17993                                       |
| 17     | Capscrew.31 x .75 UNF   | 12        | 10258                                       |
| 18     | Hubcap with gasket  | 2         | 17725/17989                                 |
| 19     | Hub & Drum Assembly   | 2         | See table on page 22                        |
| 20     | Bearing Kit   | 2         | SRK19 (tapered axle), SRK20 (straight axle) |
| 21     | Dust Shield   | 2         | 17337                                       |
| 22     | Shoe Kit  | 2         | SRK21                                       |
| 23     | Star Washer, .31  | 12        | 10259                                       |
| 24     | Camshaft  | 2 LH & RH | 202127-090                                  |

# Tailgate Latch Assembly Parts



## Tailgate Latch Assembly

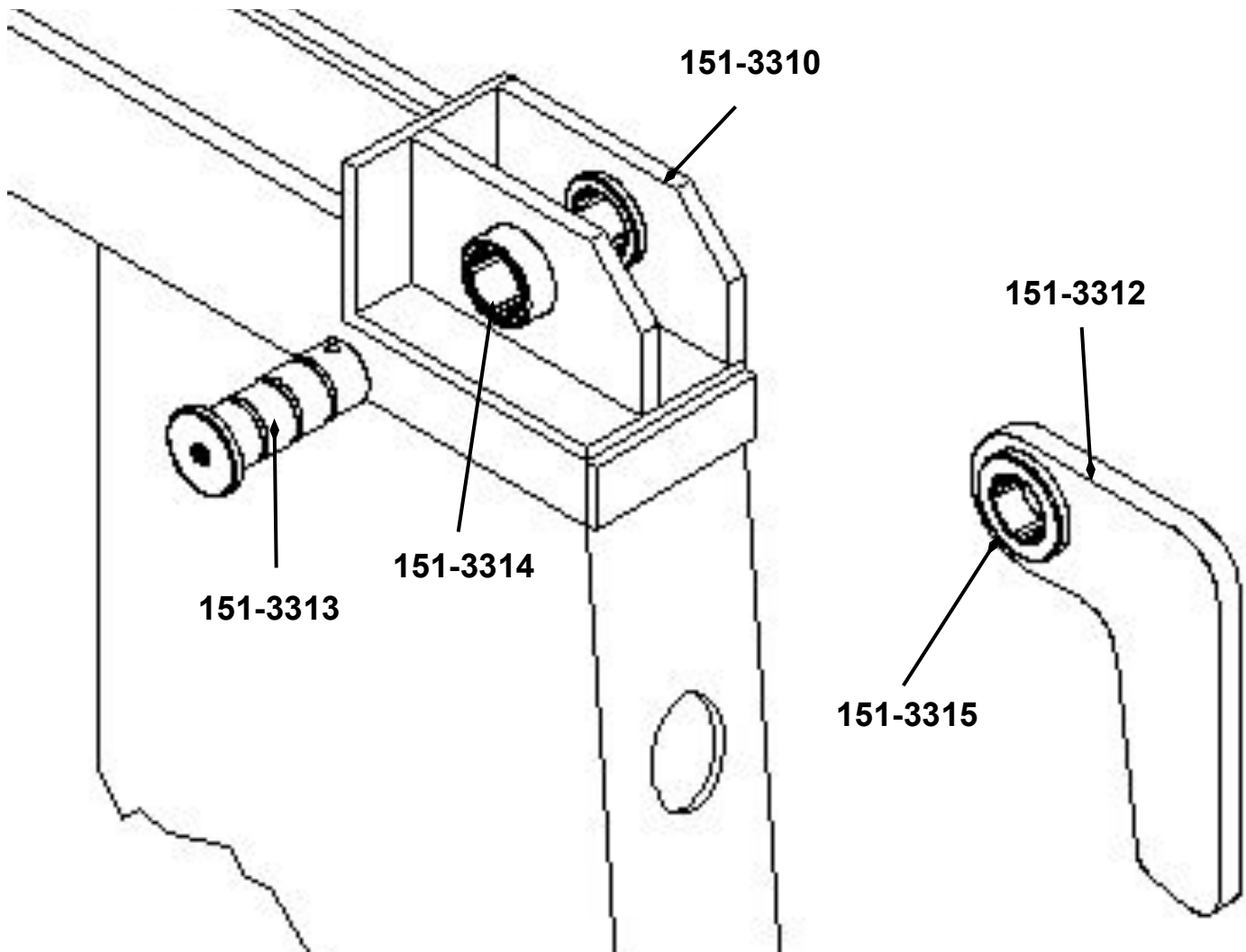
151-3318 – Latch Arm (Left or Right)  
151-3319 – Clevis (Left or Right)  
151-3321 – Tailgate Latch (Left or Right)  
151-3322 – Latch Rod (Left or Right)  
151-3325 – Complete Tailgate Rear Latch Assy  
151-3327 – Rear Latch Inner Pivot Arm  
151-3349 – 2½" X 8" Cylinder

## T-6 Valve

151-3352 - Electric Valve  
151-3353 - Glad Hand Valve  
151-3354 - Push-Pull Valve



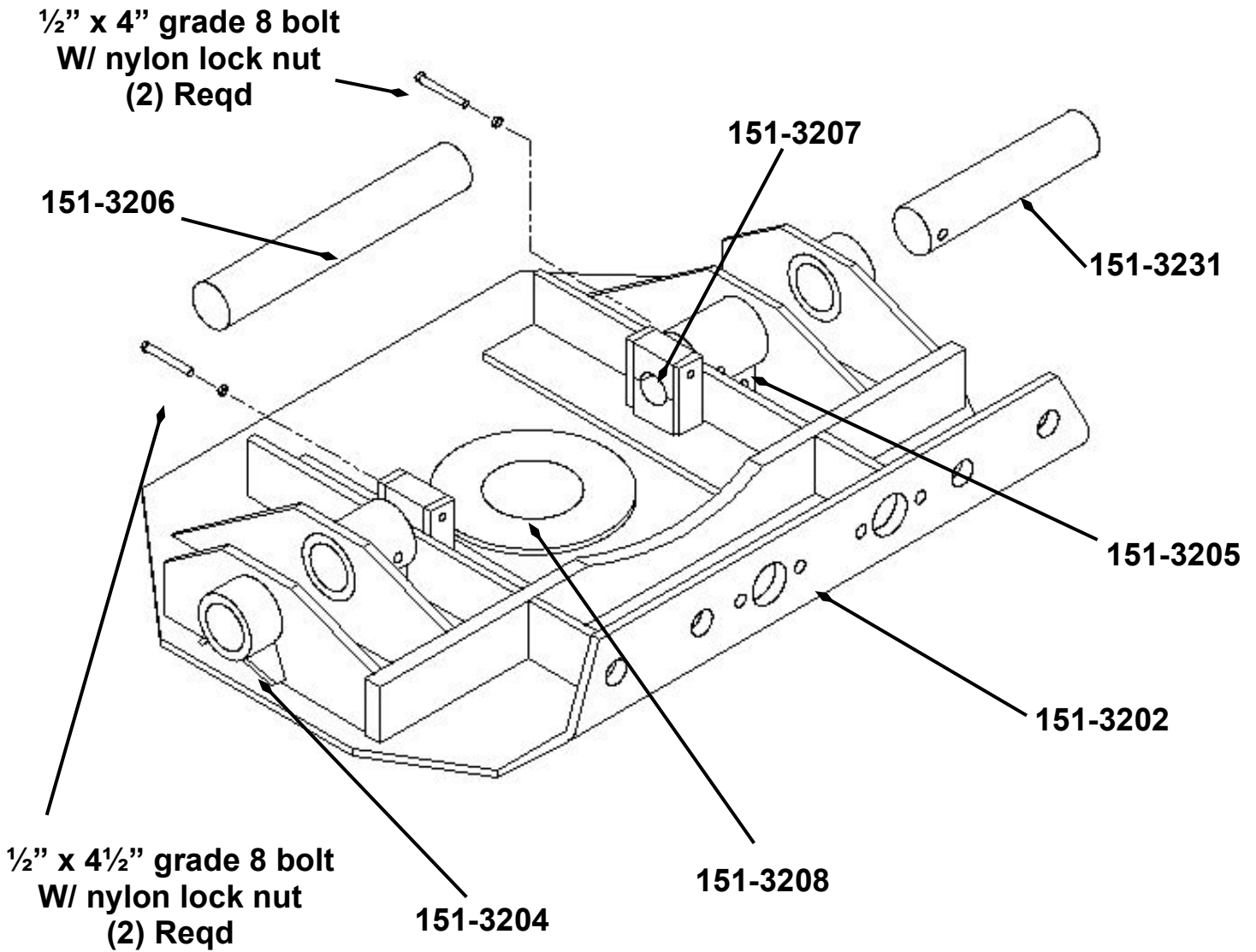
# Tailgate Hinge Assembly Parts



## Tailgate Hinge Assembly

- 151-3310 – Tailgate Hinge Assembly
- 151-3312 – Hinge Arm WO/ Bushing
- 151-3313 – Hinge Pin
- 151-3314 – Short Bushing
- 151-3315 – Long Bushing

# Upper 5<sup>th</sup> Wheel Parts



## Upper 5th Wheel

- 151-3202 – 5<sup>th</sup> Wheel Assembly
- 151-3204 – Outer Bushing (2) Reqd
- 151-3205 – Inner Bushing (2) Reqd
- 151-3206 – Cylinder Pin
- 151-3207 – Cylinder Pin Block (2) Reqd
- 151-3208 – King Pin
- 151-3231 – Front Draft Arm Pin (2) Reqd

# Parts List

## Air System

151-3340 – Air Tank  
 151-3341 – Spring Brake Valve  
 151-3343 – Brake Chamber  
 151-4101 – Sensor with Cable  
 151-4102 – ABS Valve

## Draft Arm

151-3245 – 22'-24' Frameless Draft Arm  
 151-3246 – 26' Frameless Draft Arm  
 151-3247 – 28' 30' Frameless Draft Arm  
 151-3248 – 32' 35' 36' Frameless Draft Arm  
 151-3218 – 22' High Dump Draft Arm  
 151-3219 – 24' High Dump Draft Arm  
 151-3220 – 26' High Dump Draft Arm  
 151-3221SH – 28' High Dump Draft Arm  
 151-3221LH – 30' High Dump Draft Arm  
 151-3222 – 32' High Dump Draft Arm  
 151-3239 – Rear Draft Arm Pin  
 151-3233 – Bushing (4) Req'd  
 151-3236 – Draft Arm Guide (2) Req'd  
 151-3397 – Complete Landing Leg Assy  
 151-3398 – Landing Leg Assembly (1 Side)  
 151-3396 – Lower Landing Leg Assembly  
 151-3394 – Upper Landing Leg Assembly  
 151-3393 – Landing Leg Bracket  
 151-3389 – Landing Leg Pin

## Hybrid Hydraulic Cylinder

| <u>Length</u> | <u>Frameless</u> | <u>Hi-Dump</u> |
|---------------|------------------|----------------|
| 22'           | 84-161           | 84-161         |
| 24'           | 84-170           | 95-190         |
| 26'           | 85-190           | 95-220         |
| 28'           | 85-220           | 95-235         |
| 30'           | 95-220           | 95-235         |
| 32'           | 95-235           | 95-250         |

## Lights

151-3330 – Complete Light Panel  
 151-3332 – Upper Rear Marker Incan  
 151-3333Y – Front Marker Incan  
 151-3333R – Lower Rear Marker Incan  
 151-3334 – Rear Brake Incan  
 151-3335 – Grommet for Upper Rear (L&R)  
 151-3336 – Grommet for Marker  
 151-3337 – Grommet for Rear Brake  
 151-3338 – License Incan  
 151-3339 – Junction Box Incan  
 151-3411 – Harness Upper Rear Marker  
 151-3412 – Harness Front Side Marker  
 151-3413 – Harness Lower Rear Side Mrkr  
 151-3414 – Harness Lower Rear Mrkr/Lic  
 151-3415 L/R – Harness Rear Brake  
 151-3432 – LED Upper Rear Marker  
 151-3433Y – LED Front Side Marker  
 151-3433R – LED Lower Rear Marker  
 151-3434 – LED Rear Brake

## Suspension

- (1) SP-0193 – Polyurethane Pad
- (2) SP-0038 – Washer (optional)
- (3) Part # Depends upon Length
- (4) None
- (5) None
- (6) See Chart – U-Bolt
- (7) SP-0003 – Spring Cap
- (8) See Chart – Spring
- (9) SP-0001 – Trunion / Spring Cap
- (10) SP-0006 – Trunion Cap
- (11) 10003 – High Nut 1.125 UNF.
- (12) See Chart – Cap Spring End
- (13) 10034 – Hex bolt 5/8-18 x 2" GR8
- (14) See Chart – Axle Spring Pin Assy
- (15) 10029 – Lock Nut .625 UNF. GR8
- (16) See Chart – U-Bolt
- (17) SP-0225 – Polyurethane Bushing
- (18) 10045 – 1.125 Washer
- (19) 10032 – .625 Washer
- (20) SP-0083 – Shim Spacer

## **Tailgate Hinge**

151-3310 – Tailgate Hinge Assembly  
151-3312 – Hinge Arm WO/ Bushing  
151-3313 – Hinge Pin  
151-3314 – Short Bushing  
151-3315 – Long Bushing

## **Tailgate Latch**

151-3318 – Latch Arm (Left or Right)  
151-3319 – Clevis (Left or Right)  
151-3321 – Tailgate Latch Assembly  
151-3322 – Latch Rod (Left or Right)  
151-3325 – Complete Tailgate Latch Assy.  
151-3327 – Rear Latch Inner Pivot Arm  
151-3349 – 2½” X 8” Cylinder

## **T-6 Valve**

151-3352 – Electric Valve  
151-3353 – Glad Hand Valve  
151-3354 – Push-Pull Valve

## **Upper 5th Wheel**

151-3202 – 5<sup>th</sup> Wheel Assembly  
151-3204 – Outer Bushing (2) Req'd  
151-3205 – Inner Bushing (2) Req'd  
151-3206 – Cylinder Pin  
151-3207 – Cylinder Pin Block (2) Req'd  
151-3208 – King Pin  
151-3231 – Front Draft Arm Pin (2) Req'd

## **Manufacturer's Warranty**

### ***Lufkin Manufacturing***

***Lufkin Manufacturing***, referred to herein as the Manufacturer, warrants each new product of its own manufacture to be free from defects in material and workmanship, under normal use and service, to the original user only, for a period of twelve (12) months from the date of purchase, subject to conditions and warranty extensions outlined below. Manufacturer's obligation under this warranty is limited to repair or replacement with a similar part, any part of the product of its manufacture which is returned to Manufacturer within thirty (30) days after discovery of the defect, properly identified and transportation charges prepaid, and not more than twelve (12) months after purchase by the original user, provided that in Manufacturer's judgement the part is defective in material or workmanship.

Manufacturer will furnish without charge, FOB its plant, a similar part to replace any part of a product of its manufacture which proves to be defective in material or workmanship while in normal use and service during this period.

The Manufacturer's warranty or obligation in connection with the sale of the product:

1. Shall be expressly limited to the repair or replacement of defective parts, as stated above, all other damage and claims, statutory or otherwise, being hereby expressly waived by the purchaser and covers only those labor charges specifically authorized by Manufacturer.
2. Shall not apply to failure or damage incurred through neglect, lack of maintenance, misuse, accident, improper installation, reconstructing or modifying of assemblies or through any other cause beyond the control of the Manufacturer.
3. Shall not apply if the product has been operated beyond the Manufacturer's recommended capacity.
4. Does not cover products of other manufacturers beyond such warranty as is made by such manufacturer.
5. Requires that all warranty repairs shall be made by a Manufacturer approved facility. A Manufacturer's distributor must obtain Manufacturer's authorization before making warranty repair or replacement.
6. Includes a Warranty Extension following the initial twelve (12) months, subject to the following percentages of all parts and labor cost: 13-24 months, eighty percent (80%); 25-36 months, sixty percent (60%); 37-48 months, forty percent (40%); and 49-60 months, twenty percent (20%).

No claim under this warranty shall be valid unless such claim is submitted within sixty (60) months after date of sale, and within thirty (30) days after the discovery of the defect, which is the basis for such claim, whichever shall occur first.

The foregoing is Manufacturer's sole warranty and Manufacturer makes no other warranties of any kind whatsoever, express, implied, or statutory. All implied warranties or merchantability and fitness for a particular purpose, written or oral are hereby disclaimed by the Manufacturer.

In no event shall ***Lufkin Manufacturing***, be liable for consequential damages, nor shall ***Lufkin Manufacturing's*** liability on any claim for any direct, incidental or special damages arising out of, or connected with, sales contract or manufacture, sale, delivery, or use of the products exceed the purchase price of the goods.



**Lufkin Manufacturing**  
20020 Interstate 30  
Benton, AR 72019  
Ph: (501) 316-4040  
Fax: (501) 634-4141  
[www.lufkinmfg.com](http://www.lufkinmfg.com)